

Triton Bond Trust 2026-1 Series 1

Collateral Report

OK

Model Period	1
Collection Period Start	3-Mar-26
Collection Period End	31-Mar-26
No. of Days	29
Interest Period Start	3-Mar-26
Interest Period End	14-Apr-26
No. of Days	43
Determination Date	13-Apr-26
Payment Date	15-Apr-26



TABLE 1: PORTFOLIO SUMMARY

Description	Value
Pool Cut Date	31-Mar-26
Total Loan Pool Balance	2,630,393,830
Total Loan Pool Balance (Consolidated)	2,630,393,830
No. of Loans (Unconsolidated)	6,580
No. of Loans (Consolidated)	5,954
Average Loan Balance (Consolidated)	441,786
Maximum Loan Balance (consolidated)	2,385,085
Weighted Average Current LVR (%)	63.61%
Maximum Current LVR (%)	94.65%
Weighted Average Interest Rate	6.61%
Weighted Average Fixed Rate	6.19%
Weighted Average Variable Rate	6.61%
Weighted Average Seasoning (years)	2.03
Weighted Average Remaining Term (years)	27.43
Maximum Remaining Term (years)	29.83
Percentage of Fixed Rate Loans (%)	1.30%
Percentage of Interest Only Loans (%)	5.60%
Percentage of Line of Credit Loans (%)	0.00%
Percentage of Low Documentation Loans (%)	0.00%

TABLE 2: CURRENT LOAN BALANCE - (Consolidated)

Value	Value (\$)	% by Value	Loans	% by Loans
<= \$100,000	18,555,836	0.71%	395	6.63%
\$100,000 > and <= \$150,000	26,960,622	1.02%	213	3.58%
\$150,000 > and <= \$200,000	59,406,220	2.26%	335	5.63%
\$200,000 > and <= \$250,000	96,657,814	3.67%	427	7.17%
\$250,000 > and <= \$300,000	130,519,708	4.96%	473	7.94%
\$300,000 > and <= \$350,000	162,504,254	6.18%	499	8.38%
\$350,000 > and <= \$400,000	215,800,740	8.20%	572	9.61%
\$400,000 > and <= \$450,000	219,207,724	8.33%	516	8.67%
\$450,000 > and <= \$500,000	264,418,452	10.05%	556	9.34%
\$500,000 > and <= \$550,000	217,188,291	8.26%	415	6.97%
\$550,000 > and <= \$600,000	203,261,497	7.73%	355	5.96%
\$600,000 > and <= \$650,000	168,474,415	6.40%	270	4.53%
\$650,000 > and <= \$700,000	141,946,187	5.40%	211	3.54%
\$700,000 > and <= \$750,000	90,495,609	3.44%	125	2.10%
\$750,000 > and <= \$800,000	87,541,937	3.33%	113	1.90%
\$800,000 > and <= \$850,000	67,595,027	2.57%	82	1.38%
\$850,000 > and <= \$900,000	60,328,829	2.29%	69	1.16%
\$900,000 > and <= \$950,000	51,531,815	1.96%	56	0.94%
\$950,000 > and <= \$1,000,000	46,791,735	1.78%	48	0.81%
> \$1,000,000	301,207,018	11.45%	224	3.76%
Total	2,630,393,830	100.00%	5,954	100.00%

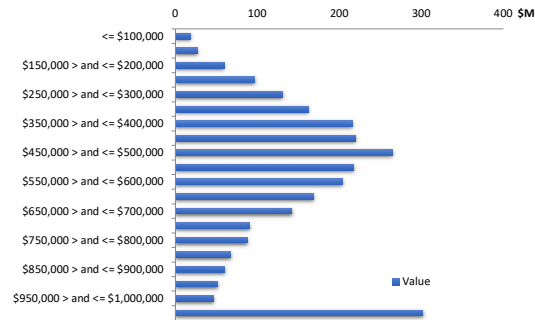


TABLE 3: CURRENT LVR - (Consolidated)

Percentage	Value (\$)	% by Value	Loans	% by Loans
<= 25%	70,094,350	2.66%	585	9.83%
25% > and <= 30%	48,814,829	1.86%	205	3.44%
30% > and <= 35%	66,029,006	2.51%	230	3.86%
35% > and <= 40%	103,179,918	3.72%	301	5.06%
40% > and <= 45%	97,816,049	3.72%	256	4.30%
45% > and <= 50%	123,336,692	4.69%	306	5.14%
50% > and <= 55%	156,537,032	5.95%	351	5.90%
55% > and <= 60%	211,255,343	8.03%	455	7.64%
60% > and <= 65%	237,939,698	9.05%	482	8.10%
65% > and <= 70%	399,046,288	15.17%	778	13.07%
70% > and <= 75%	307,429,020	11.69%	551	9.25%
75% > and <= 80%	754,337,294	28.68%	1366	22.94%
80% > and <= 85%	13,127,260	0.50%	27	0.45%
85% > and <= 90%	27,686,972	1.05%	40	0.67%
90% > and <= 95%	13,764,079	0.52%	21	0.35%
95% > and <= 100%	0	0.00%	0	0.00%
100% > and <= 105%	0	0.00%	0	0.00%
> 105%	0	0.00%	0	0.00%
Total	2,630,393,830	100.00%	5,954	100.00%

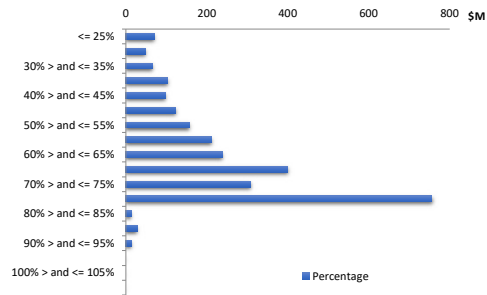


TABLE 4: GEOGRAPHIC DISTRIBUTION - by primary security property

State	Value (\$)	% by Value	Loans	% by Loans
New South Wales	744,879,910	28.32%	1,641	24.94%
Victoria	743,247,414	28.26%	1,923	29.22%
Queensland	701,748,708	26.68%	1,815	27.58%
Western Australia	212,800,710	8.09%	544	8.27%
South Australia	137,533,998	5.23%	387	5.88%
Tasmania	22,521,217	0.86%	88	1.34%
Australian Capital Territory	50,170,573	1.91%	137	2.08%
Northern Territory	17,491,300	0.66%	45	0.68%
Total	2,630,393,830	100.00%	6,580	100.00%

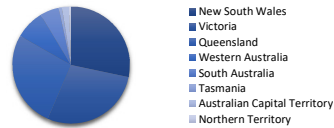


TABLE 5: METRO VS. NON-METRO DISTRIBUTION - by primary security property

Location	Value (\$)	% by Value	Loans	% by Loans
Metro	1,984,037,417	75.43%	4,793	72.84%
Non Metro	610,770,472	23.22%	1,693	25.73%
Inner City	35,585,941	1.35%	94	1.43%
Total	2,630,393,830	100.00%	6,580	100.00%

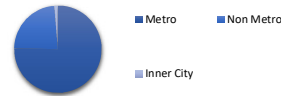


TABLE 6: DOCUMENTATION TYPE

Documentation	Value (\$)	% by Value	Loans	% by Loans
Full Doc	2,630,393,829.86	100.00%	6,580	100.00%
No Doc	0.00	0.00%	0	0.00%
Alt Doc	0.00	0.00%	0	0.00%
Low Doc	0.00	0.00%	0	0.00%
Total	2,630,393,830	100.00%	6,580	100.00%

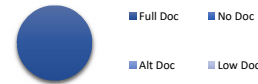


TABLE 7: MORTGAGE INSURER

LMI Provider	Value (\$)	% by Value	Loans	% by Loans
QBE	27,890,249	1.06%	274	4.16%
ARCH	61,776,188	2.35%	96	1.46%
Helia	149,009,330	5.66%	587	8.92%
No Data	2,391,718,063	90.93%	5,623	85.46%
Total	2,630,393,830	100.00%	6,580	100.00%

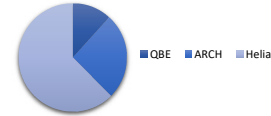


TABLE 8: ARREARS

Days	Value (\$)	% by Value	Loans	% by Loans
Current	2,584,165,578	98.24%	6,493	98.68%
1-30 days	44,723,335	1.70%	83	1.26%
31-60 days	1,504,916	0.06%	4	0.06%
61-90 days	0	0.00%	0	0.00%
91-120 days	0	0.00%	0	0.00%
121-150 days	0	0.00%	0	0.00%
151-180 days	0	0.00%	0	0.00%
181 days or more	0	0.00%	0	0.00%
Total	2,630,393,830	100.00%	6,580	100.00%

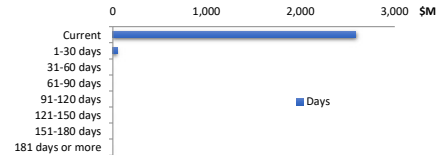


TABLE 9: SEASONING

Years	Value (\$)	% by Value	Loans	% by Loans
0 to less than 1	1,673,930,603	63.64%	3,373	51.26%
1 to less than 2	234,457,673	8.91%	492	7.48%
2 to less than 3	29,549,553	1.12%	73	1.11%
3 to less than 4	147,177,183	5.60%	367	5.58%
4 to less than 5	99,176,823	3.77%	275	4.18%
5 to less than 6	270,327,381	10.28%	1,027	15.61%
6 to less than 7	62,130,334	2.36%	241	3.66%
7 to less than 8	26,517,909	1.01%	124	1.88%
8 to less than 9	30,886,786	1.17%	137	2.08%
9 to less than 10	19,457,658	0.74%	104	1.58%
10 to less than 11	12,014,055	0.46%	62	0.94%
11 to less than 12	0	0.00%	0	0.00%
12 to less than 13	181,021	0.01%	1	0.02%
13 to less than 14	0	0.00%	0	0.00%
14 to less than 15	0	0.00%	0	0.00%
Greater than 15	24,586,851	0.93%	304	4.62%
Total	2,630,393,830	100.00%	6,580	100.00%

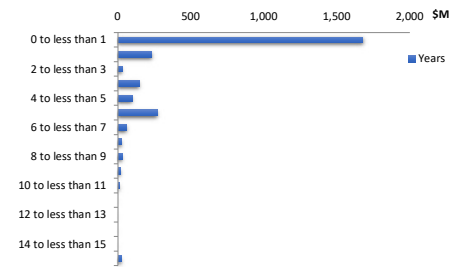


TABLE 10: REMAINING TERM

Years	Value (\$)	% by Value	Loans	% by Loans
0 to 5	2,372,252	0.09%	62	0.94%
more than 5 to 10	15,703,774	0.60%	202	3.07%
more than 10 to 15	28,537,611	1.08%	166	2.52%
more than 15 to 20	65,408,781	2.49%	269	4.09%
more than 20 to 25	434,204,968	16.51%	1,605	24.39%
more than 25 to 30	2,084,166,444	79.23%	4,276	64.98%
Greater than 30	0	0.00%	0	0.00%
Total	2,630,393,830	100.00%	6,580	100.00%

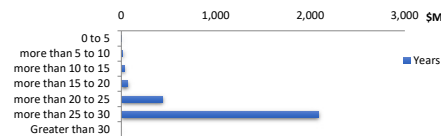


TABLE 11: ORIGINAL TERM

Years	Value (\$)	% by Value	Loans	% by Loans
0 to 5	0	0.00%	0	0.00%
more than 5 to 10	1,072,905	0.04%	9	0.14%
more than 10 to 15	5,634,183	0.21%	34	0.52%
more than 15 to 20	42,356,254	1.61%	188	2.86%
more than 20 to 25	105,433,968	4.01%	362	5.50%
more than 25 to 30	2,475,896,520	94.13%	5,987	90.99%
Greater than 30	0	0.00%	0	0.00%
Total	2,630,393,830	100.00%	6,580	100.00%

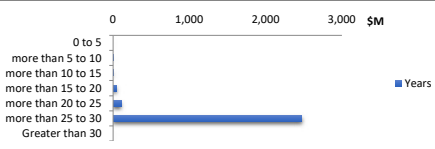


TABLE 12: LOAN TYPE

	Value (\$)	% by Value	Loans	% by Loans
Principal & Interest	2,483,004,507	94.40%	6,204	94.29%
Interest Only (excl. LOC)	147,389,323	5.60%	376	5.71%
Line of Credit	0	0.00%	0	0.00%
Total	2,630,393,830	100.00%	6,580	100.00%



TABLE 13: INTEREST ONLY REMAINING TERM

Years	Value (\$)	% by Value	Loans	% by Loans
0 to 1	31,365,081	1.19%	69	18.35%
more than 1 to 2	35,356,555	1.34%	102	27.13%
more than 2 to 3	6,364,675	0.24%	17	4.52%
more than 3 to 4	9,816,103	0.37%	23	6.12%
more than 4 to 5	64,486,909	2.45%	165	43.88%
more than 5 to 6	0	0.00%	0	0.00%
more than 6 to 7	0	0.00%	0	0.00%
more than 7 to 8	0	0.00%	0	0.00%
more than 8 to 9	0	0.00%	0	0.00%
more than 9 to 10	0	0.00%	0	0.00%
Greater than 10	0	0.00%	0	0.00%
Total	147,389,323	5.60%	376	100.00%

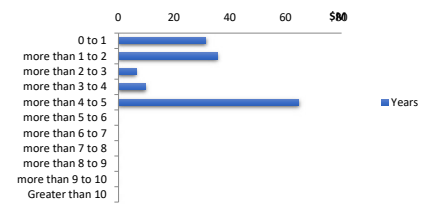


TABLE 14: REPAYMENT TYPE

Rate Type	Balance	% Balance	Loan Count	% Loan Count
Variable Rate	2,596,218,535	98.70%	6,504	98.84%
Fixed Rate	34,175,295	1.30%	76	1.16%
Total	2,630,393,830	100.00%	6,580	100.00%



TABLE 15: FIXED RATE REMAINING TERM

Years	Value (\$)	% by Value	Loans	% by Loans
0 to 1	5,659,819	0.22%	12	0.18%
more than 1 to 2	1,706,459	0.06%	5	0.08%
more than 2 to 3	7,860,223	0.30%	19	0.29%
more than 3 to 4	3,340,802	0.13%	8	0.12%
more than 4 to 5	15,610,653	0.59%	31	0.47%
Greater than 5	-2,661	0.00%	1	0.02%
Total	34,175,295	1.30%	76	1.16%

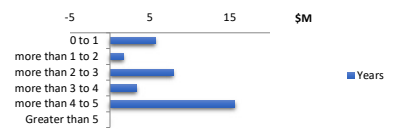


TABLE 16: BORROWER TYPE

	Value (\$)	% by Value	Loans	% by Loans
Individual	1,495,784,657	56.87%	3,282	55.12%
Company	1,134,609,173	43.13%	2,672	44.88%
Total	2,630,393,830	100.00%	5,954	100.00%



TABLE 17: OCCUPANCY TYPE

	Value (\$)	% by Value	Loans	% by Loans
Owner Occupied	1,051,946,002	39.99%	2,728	41.46%
Investment	1,578,447,828	60.01%	3,852	58.54%
Total	2,630,393,830	100.00%	6,580	100.00%



TABLE 18: PROPERTY TYPE

	Value (\$)	% by Value	Loans	% by Loans
House	2,005,570,715	76.25%	4,288	72.02%
Apartment	63,712,752	2.42%	203	3.41%
Townhouse	68,287,707	2.60%	190	3.19%
Unit	489,353,473	18.60%	1,258	21.13%
Villa	1,974,394	0.08%	8	0.13%
Vacant Land	0	0.00%	0	0.00%
Rural Residential	1,494,788	0.06%	7	0.12%
Total	2,630,393,830	100.00%	5,954	100.00%

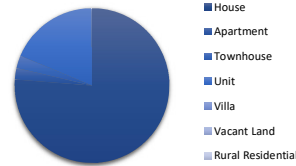


TABLE 19: INTEREST RATE DISTRIBUTION

Percentage	Value (\$)	% by Value	Loans	% by Loans
less than 4.5%	4,751,812	0.18%	12	0.18%
4.5% to less than 5%	822,213	0.03%	2	0.03%
5% to less than 5.5%	8,864,949	0.34%	28	0.43%
5.5% to less than 6%	490,243,879	18.64%	1,297	19.71%
6% to less than 6.5%	585,882,318	22.27%	1,392	21.16%
6.5% to less than 7%	719,779,989	27.36%	1,814	27.57%
7% to less than 7.5%	746,998,476	28.40%	1,657	25.18%
7.5% to less than 8%	34,936,663	1.33%	119	1.81%
8% to less than 8.5%	13,738,406	0.52%	126	1.91%
Greater than 8.5%	24,375,124	0.93%	133	2.02%
Total	2,630,393,830	100.00%	6,580	100.00%

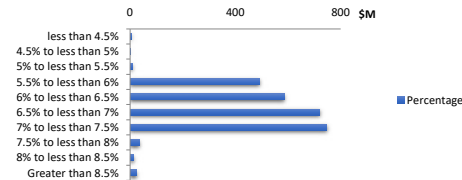


TABLE 20: TOP 10 POST CODES - by value

Postcode	Value (\$)	% by Value	Loans	% by Loans
3029	34,156,787	1.30%	87	1.32%
3064	33,636,653	1.28%	79	1.20%
4209	26,921,509	1.02%	58	0.88%
3977	24,577,147	0.93%	49	0.74%
4207	23,025,475	0.88%	52	0.79%
4125	19,747,906	0.75%	54	0.82%
3030	18,532,990	0.70%	42	0.64%
3338	17,704,346	0.67%	45	0.68%
3024	15,978,782	0.61%	41	0.62%
2560	15,150,508	0.58%	32	0.49%
Total	229,432,002	8.72%	639	8.19%

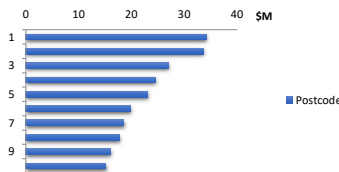


TABLE 22: Hardship

Hardship Type	Value (\$)	% by Value	Loans	% by Loans
COVID-19	-	0.00%	0	0.00%
Standard	884,786.15	0.03%	4	0.06%
Non-Hardship	2,629,509,043.71	99.97%	6,576	99.94%
Total	2,630,393,830	100.00%	6,580	100.00%

