

Triton Bond Trust 2025-3

Collateral Report
OK

Model Period	10
Collection Period Start	1-Mar-26
Collection Period End	31-Mar-26
No. of Days	31
Interest Period Start	10-Mar-26
Interest Period End	8-Apr-26
No. of Days	30
Determination Date	7-Apr-26
Payment Date	9-Apr-26



TABLE 1: PORTFOLIO SUMMARY

Description	Value
Pool Cut Date	31-Mar-26
Total Loan Pool Balance	985,424,764
No. of Loans (Unconsolidated)	2,361
No. of Loans (Consolidated)	2,233
Average Loan Balance (Consolidated)	441,301
Maximum Loan Balance (consolidated)	2,952,304
Weighted Average Current LVR (%)	63.88%
Maximum Current LVR (%)	98.30%
Weighted Average Interest Rate	7.03%
Weighted Average Fixed Rate	7.34%
Weighted Average Variable Rate	7.02%
Weighted Average Seasoning (years)	1.73
Weighted Average Remaining Term (years)	27.57
Maximum Remaining Term (years)	30.00
Percentage of Fixed Rate Loans (%)	1.90%
Percentage of Interest Only Loans (%)	5.14%
Percentage of Line of Credit Loans (%)	0.00%
Percentage of Low Documentation Loans (%)	0.37%

TABLE 2: CURRENT LOAN BALANCE - (Consolidated)

Value	Value (\$)	% by Value	Loans	% by Loans
<= \$100,000	5,817,581	0.59%	124	5.55%
\$100,000 > and <= \$150,000	12,594,412	1.28%	100	4.48%
\$150,000 > and <= \$200,000	20,269,476	2.06%	114	5.11%
\$200,000 > and <= \$250,000	38,550,655	3.91%	170	7.61%
\$250,000 > and <= \$300,000	49,136,061	4.99%	177	7.93%
\$300,000 > and <= \$350,000	76,258,393	7.74%	233	10.43%
\$350,000 > and <= \$400,000	93,967,125	9.54%	250	11.20%
\$400,000 > and <= \$450,000	97,333,716	9.88%	229	10.26%
\$450,000 > and <= \$500,000	91,527,255	9.29%	193	8.64%
\$500,000 > and <= \$550,000	79,301,161	8.05%	152	6.81%
\$550,000 > and <= \$600,000	61,873,296	6.28%	108	4.84%
\$600,000 > and <= \$650,000	43,281,248	4.39%	69	3.09%
\$650,000 > and <= \$700,000	34,501,739	3.50%	51	2.28%
\$700,000 > and <= \$750,000	23,091,784	2.34%	32	1.43%
\$750,000 > and <= \$800,000	26,288,364	2.67%	34	1.52%
\$800,000 > and <= \$850,000	20,583,599	2.09%	25	1.12%
\$850,000 > and <= \$900,000	23,538,984	2.39%	27	1.21%
\$900,000 > and <= \$950,000	16,595,943	1.68%	18	0.81%
\$950,000 > and <= \$1,000,000	19,379,317	1.97%	20	0.90%
> \$1,000,000	151,534,655	15.38%	107	4.79%
Total	985,424,764	100.0%	2,233	100.0%

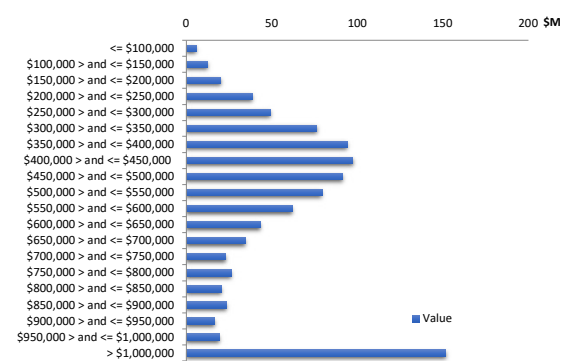


TABLE 3: CURRENT LVR - (Consolidated)

Percentage	Value (\$)	% by Value	Loans	% by Loans
<= 25%	29,681,935	3.01%	234	10.48%
25% > and <= 30%	19,007,303	1.93%	81	3.63%
30% > and <= 35%	29,887,171	3.03%	99	4.43%
35% > and <= 40%	30,833,227	3.13%	91	4.08%
40% > and <= 45%	36,900,750	3.74%	96	4.30%
45% > and <= 50%	43,261,652	4.39%	98	4.39%
50% > and <= 55%	45,688,143	4.64%	110	4.93%
55% > and <= 60%	78,159,440	7.93%	154	6.90%
60% > and <= 65%	89,447,375	9.08%	187	8.37%
65% > and <= 70%	166,267,297	16.87%	316	14.15%
70% > and <= 75%	100,768,823	10.23%	183	8.20%
75% > and <= 80%	283,028,195	28.72%	536	24.00%
80% > and <= 85%	12,101,922	1.23%	20	0.90%
85% > and <= 90%	13,942,147	1.41%	19	0.85%
90% > and <= 95%	5,106,740	0.52%	7	0.31%
95% > and <= 100%	1,342,645	0.14%	2	0.09%
100% > and <= 105%	0	0.00%	0	0.00%
> 105%	0	0.00%	0	0.00%
Total	985,424,764	100.00%	2,233	100.00%

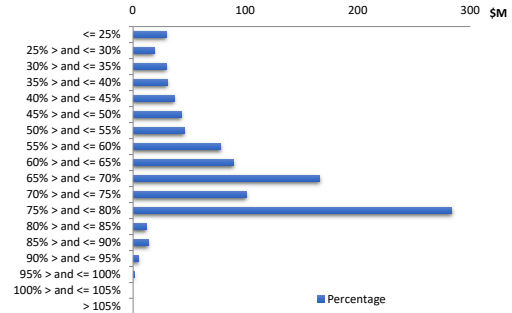


TABLE 4: GEOGRAPHIC DISTRIBUTION - by primary security property

State	Value (\$)	% by Value	Loans	% by Loans
New South Wales	244,932,830	24.86%	510	21.60%
Victoria	228,564,335	23.19%	544	23.04%
Queensland	341,976,292	34.70%	887	37.57%
Western Australia	88,687,813	9.00%	216	9.15%
South Australia	45,626,843	4.63%	118	5.00%
Tasmania	10,924,813	1.11%	30	1.27%
Australian Capital Territory	16,504,489	1.67%	36	1.52%
Northern Territory	8,207,350	0.83%	20	0.85%
Total	985,424,764	100.00%	2,361	100.00%

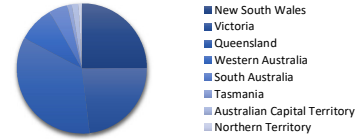


TABLE 5: METRO VS. NON-METRO DISTRIBUTION - by primary security property

Location	Value (\$)	% by Value	Loans	% by Loans
Metro	742,968,811	75.40%	1,736	73.53%
Non Metro	206,992,551	21.01%	548	23.21%
Inner City	35,463,402	3.60%	77	3.26%
Total	985,424,764	100.00%	2,361	100.00%

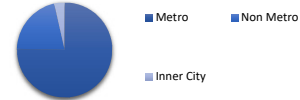


TABLE 6: DOCUMENTATION TYPE

Documentation	Value (\$)	% by Value	Loans	% by Loans
Full Doc	980,203,995.19	99.47%	2,313	97.97%
No Doc	0.00	0.00%	0	0.00%
Alt Doc	1,573,827.26	0.16%	13	0.55%
Low Doc	3,646,941.43	0.37%	35	1.48%
Total	985,424,764	100.00%	2,361	100.00%

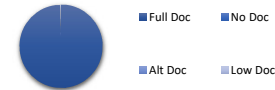


TABLE 7: MORTGAGE INSURER

LMI Provider	Value (\$)	% by Value	Loans	% by Loans
QBE	5,094,201	0.52%	43	1.82%
ARCH	46,010,218	4.67%	67	2.84%
Helia	33,588,995	3.41%	140	5.93%
No Data	900,731,349	91.41%	2,111	89.41%
Total	985,424,764	100.00%	2,361	100.00%

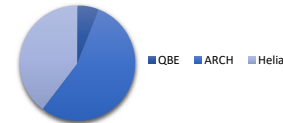


TABLE 8: ARREARS

Days	Value (\$)	% by Value	Loans	% by Loans
Current	965,148,679	97.94%	2,311	97.88%
1-30 days	18,794,703	1.91%	47	1.99%
31-60 days	668,421	0.07%	1	0.04%
61-90 days	812,960	0.08%	2	0.08%
91-120 days	0	0.00%	0	0.00%
121-150 days	0	0.00%	0	0.00%
151-180 days	0	0.00%	0	0.00%
181 days or more	0	0.00%	0	0.00%
Total	985,424,764	100.00%	2,361	100.00%

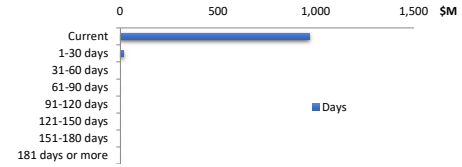


TABLE 9: SEASONING

Years	Value (\$)	% by Value	Loans	% by Loans
0 to less than 1	112,374,137	11.40%	175	7.41%
1 to less than 2	706,653,690	71.71%	1,634	69.21%
2 to less than 3	82,548,908	8.38%	201	8.51%
3 to less than 4	26,255,403	2.66%	58	2.46%
4 to less than 5	4,860,896	0.49%	14	0.59%
5 to less than 6	8,511,264	0.86%	29	1.23%
6 to less than 7	18,509,336	1.88%	91	3.85%
7 to less than 8	12,497,431	1.27%	60	2.54%
8 to less than 9	3,300,592	0.33%	18	0.76%
9 to less than 10	1,392,939	0.14%	6	0.25%
10 to less than 11	134,553	0.01%	1	0.04%
11 to less than 12	0	0.00%	0	0.00%
12 to less than 13	0	0.00%	0	0.00%
13 to less than 14	0	0.00%	0	0.00%
14 to less than 15	0	0.00%	0	0.00%
Greater than 15	8,385,616	0.85%	74	3.13%
Total	985,424,764	100.00%	2,361	100.00%

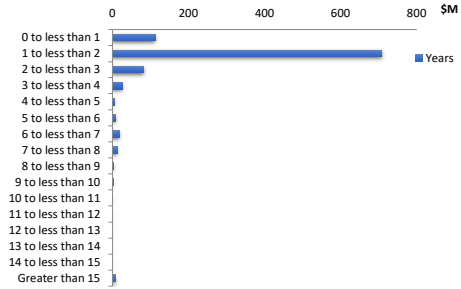


TABLE 10: REMAINING TERM

Years	Value (\$)	% by Value	Loans	% by Loans
0 to 5	4,212,527	0.43%	10	0.42%
more than 5 to 10	3,843,640	0.39%	36	1.52%
more than 10 to 15	7,254,575	0.74%	52	2.20%
more than 15 to 20	17,864,986	1.81%	78	3.30%
more than 20 to 25	84,276,506	8.55%	301	12.75%
more than 25 to 30	867,972,531	88.08%	1,884	79.80%
Greater than 30	0	0.00%	0	0.00%
Total	985,424,764	100.00%	2,361	100.00%

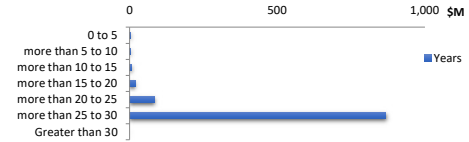


TABLE 11: ORIGINAL TERM

Years	Value (\$)	% by Value	Loans	% by Loans
0 to 5	4,030,771	0.41%	2	0.08%
more than 5 to 10	684,303	0.07%	6	0.25%
more than 10 to 15	2,034,698	0.21%	12	0.51%
more than 15 to 20	14,564,053	1.48%	64	2.71%
more than 20 to 25	43,265,075	4.39%	136	5.76%
more than 25 to 30	920,845,863	93.45%	2,141	90.68%
Greater than 30	0	0.00%	0	0.00%
Total	985,424,764	100.00%	2,361	100.00%

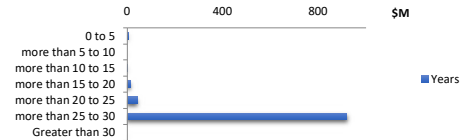


TABLE 12: LOAN TYPE

	Value (\$)	% by Value	Loans	% by Loans
Principal & Interest	934,800,027	94.86%	2,243	95.00%
Interest Only (excl. LOC)	50,624,737	5.14%	118	5.00%
Line of Credit	0	0.00%	0	0.00%
Total	985,424,764	100.00%	2,361	100.00%



TABLE 13: INTEREST ONLY REMAINING TERM

Years	Value (\$)	% by Value	Loans	% by Loans
0 to 1	10,466,596	1.06%	26	22.03%
more than 1 to 2	7,422,815	0.75%	13	11.02%
more than 2 to 3	6,712,842	0.68%	15	12.71%
more than 3 to 4	18,778,924	1.91%	53	44.92%
more than 4 to 5	7,243,560	0.74%	11	9.32%
more than 5 to 6	0	0.00%	0	0.00%
more than 6 to 7	0	0.00%	0	0.00%
more than 7 to 8	0	0.00%	0	0.00%
more than 8 to 9	0	0.00%	0	0.00%
more than 9 to 10	0	0.00%	0	0.00%
Greater than 10	0	0.00%	0	0.00%
Total	50,624,737	5.14%	118	100.00%

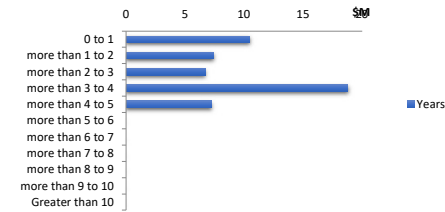


TABLE 14: REPAYMENT TYPE

Rate Type	Balance	% Balance	Loan Count	% Loan Count
Variable Rate	966,724,463	98.10%	2,317	98.14%
Fixed Rate	18,700,301	1.90%	44	1.86%
Total	985,424,764	100.00%	2,361	100.00%

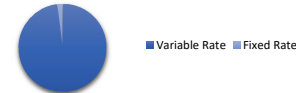


TABLE 15: FIXED RATE REMAINING TERM

Years	Value (\$)	% by Value	Loans	% by Loans
0 to 1	5,513,550	0.56%	16	0.68%
more than 1 to 2	409,015	0.04%	1	0.04%
more than 2 to 3	8,217,892	0.83%	17	0.72%
more than 3 to 4	4,559,843	0.46%	10	0.42%
more than 4 to 5	0	0.00%	0	0.00%
Greater than 5	0	0.00%	0	0.00%
Total	18,700,301	1.90%	44	1.86%

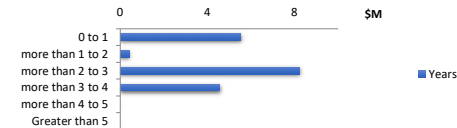


TABLE 16: BORROWER TYPE

	Value (\$)	% by Value	Loans	% by Loans
Individual	331,507,081	33.64%	687	30.77%
Company	653,917,682	66.36%	1,546	69.23%
Total	985,424,764	100.00%	2,233	100.00%



TABLE 17: OCCUPANCY TYPE

	Value (\$)	% by Value	Loans	% by Loans
Owner Occupied	217,615,269	22.08%	527	22.32%
Investment	767,809,495	77.92%	1,834	77.68%
Total	985,424,764	100.00%	2,361	100.00%



TABLE 18: PROPERTY TYPE

	Value (\$)	% by Value	Loans	% by Loans
House	550,012,386	55.81%	1,248	55.89%
Apartment	29,711,057	3.02%	76	3.40%
Townhouse	22,470,485	2.28%	67	3.00%
Commercial	196,720,737	19.96%	380	17.02%
Unit	185,521,950	18.83%	460	20.60%
Villa	491,689	0.05%	1	0.04%
Vacant Land	0	0.00%	0	0.00%
Off The Plan	496,459	0.05%	1	0.04%
Total	985,424,764	100.00%	2,233	100.00%

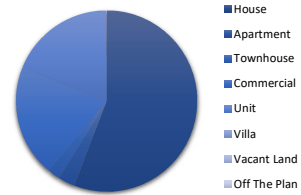


TABLE 19: INTEREST RATE DISTRIBUTION

Percentage	Value (\$)	% by Value	Loans	% by Loans
less than 4.5%	0	0.00%	0	0.00%
4.5% to less than 5%	263,247	0.03%	1	0.04%
5% to less than 5.5%	0	0.00%	5	0.21%
5.5% to less than 6%	84,336,733	8.56%	222	9.40%
6% to less than 6.5%	97,202,673	9.86%	201	8.51%
6.5% to less than 7%	258,455,556	26.23%	670	28.38%
7% to less than 7.5%	393,224,904	39.90%	935	39.60%
7.5% to less than 8%	121,276,969	12.31%	231	9.78%
8% to less than 8.5%	21,708,531	2.20%	49	2.08%
Greater than 8.5%	8,956,150	0.91%	47	1.99%
Total	985,424,764	100.00%	2,361	100.00%

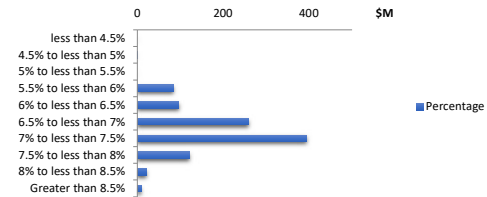


TABLE 20: TOP 10 POST CODES - by value

Postcode	Value (\$)	% by Value	Loans	% by Loans
3029	12,138,432	1.23%	30	1.27%
4209	11,241,538	1.14%	29	1.23%
3064	10,434,310	1.06%	21	0.89%
4218	10,263,682	1.04%	12	0.51%
4000	10,122,015	1.03%	16	0.68%
4740	9,320,817	0.95%	26	1.10%
4301	9,237,059	0.94%	23	0.97%
3004	8,385,704	0.85%	12	0.51%
4818	7,503,871	0.76%	19	0.80%
4350	7,459,226	0.76%	17	0.72%
Total	96,106,654	9.75%	205	8.68%

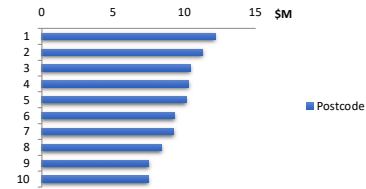


TABLE 21: Hardship

Hardship Type	Value (\$)	% by Value	Loans	% by Loans
COVID-19	-	0.00%	0	0.00%
Standard	2,861,856.23	0.29%	7	0.30%
Non-Hardship	982,562,907.65	99.71%	2,354	99.70%
Total	985,424,764	100.00%	2,361	100.00%



TABLE 22: Green Loans

Green Loans	Value (\$)	% by Value	Loans	% by Loans
Yes	-	0.00%	0	0.00%
No	985,424,763.88	100.00%	2,361	100.00%
Total	985,424,764	100.00%	2,361	100.00%

