

**Triton Bond Trust 2025-1 Series 1**

Collateral Report  
OK

Model Period	13
Collection Period Start	1-Mar-26
Collection Period End	31-Mar-26
No. of Days	31
Interest Period Start	12-Mar-26
Interest Period End	12-Apr-26
No. of Days	32
Determination Date	9-Apr-26
Payment Date	13-Apr-26

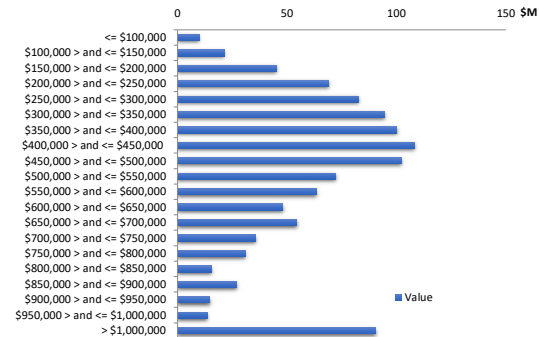


**TABLE 1: PORTFOLIO SUMMARY**

Description	Value
Pool Cut Date	31-Mar-26
Total Loan Pool Balance	1,099,567,121
No. of Loans (Unconsolidated)	3,272
No. of Loans (Consolidated)	2,967
Average Loan Balance (Consolidated)	370,599
Maximum Loan Balance (consolidated)	3,159,239
Weighted Average Current LVR (%)	61.26%
Maximum Current LVR (%)	94.45%
Weighted Average Interest Rate	6.80%
Weighted Average Fixed Rate	7.03%
Weighted Average Variable Rate	6.79%
Weighted Average Seasoning (years)	3.01
Weighted Average Remaining Term (years)	26.35
Maximum Remaining Term (years)	28.75
Percentage of Fixed Rate Loans (%)	2.26%
Percentage of Interest Only Loans (%)	8.27%
Percentage of Line of Credit Loans (%)	0.00%
Percentage of Low Documentation Loans (%)	0.00%

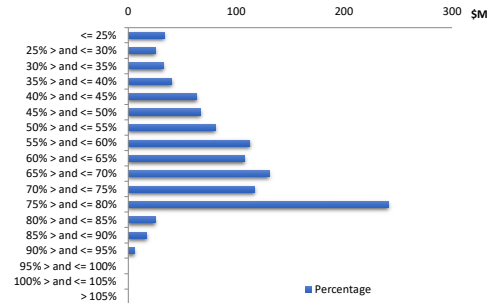
**TABLE 2: CURRENT LOAN BALANCE - (Consolidated)**

Value	Value (\$)	% by Value	Loans	% by Loans
<= \$100,000	9,798,467	0.89%	263	8.86%
\$100,000 > and <= \$150,000	21,319,602	1.94%	171	5.76%
\$150,000 > and <= \$200,000	45,115,485	4.10%	255	8.59%
\$200,000 > and <= \$250,000	69,084,109	6.28%	305	10.28%
\$250,000 > and <= \$300,000	82,661,576	7.52%	301	10.14%
\$300,000 > and <= \$350,000	94,608,107	8.60%	291	9.81%
\$350,000 > and <= \$400,000	100,191,904	9.11%	267	9.00%
\$400,000 > and <= \$450,000	108,297,647	9.85%	255	8.59%
\$450,000 > and <= \$500,000	102,293,315	9.30%	216	7.28%
\$500,000 > and <= \$550,000	72,337,777	6.58%	138	4.65%
\$550,000 > and <= \$600,000	63,377,231	5.76%	110	3.71%
\$600,000 > and <= \$650,000	48,140,857	4.38%	77	2.60%
\$650,000 > and <= \$700,000	54,497,076	4.96%	81	2.73%
\$700,000 > and <= \$750,000	35,622,530	3.24%	49	1.65%
\$750,000 > and <= \$800,000	30,919,892	2.81%	40	1.35%
\$800,000 > and <= \$850,000	15,573,062	1.42%	19	0.64%
\$850,000 > and <= \$900,000	27,017,337	2.46%	31	1.04%
\$900,000 > and <= \$950,000	14,763,173	1.34%	16	0.54%
\$950,000 > and <= \$1,000.00	13,569,003	1.23%	14	0.47%
> \$1,000,000	90,378,971	8.22%	68	2.29%
<b>Total</b>	<b>1,099,567,121</b>	<b>100.00%</b>	<b>2,967</b>	<b>100.00%</b>



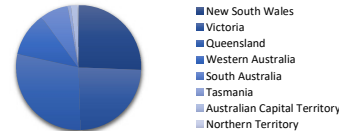
**TABLE 3: CURRENT LVR - (Consolidated)**

Percentage	Value (\$)	% by Value	Loans	% by Loans
<= 25%	33,369,435	3.03%	378	12.74%
25% > and <= 30%	25,314,705	2.30%	107	3.61%
30% > and <= 35%	32,778,812	2.98%	134	4.52%
35% > and <= 40%	40,452,105	3.68%	140	4.72%
40% > and <= 45%	63,516,917	5.78%	208	7.01%
45% > and <= 50%	66,981,552	6.09%	201	6.77%
50% > and <= 55%	80,577,065	7.33%	223	7.52%
55% > and <= 60%	112,561,281	10.24%	278	9.37%
60% > and <= 65%	107,696,125	9.79%	258	8.70%
65% > and <= 70%	130,530,314	11.87%	287	9.67%
70% > and <= 75%	116,914,818	10.63%	244	8.22%
75% > and <= 80%	240,715,859	21.89%	427	14.39%
80% > and <= 85%	25,054,790	2.28%	41	1.38%
85% > and <= 90%	17,282,403	1.57%	31	1.04%
90% > and <= 95%	5,820,941	0.53%	10	0.34%
95% > and <= 100%	0	0.00%	0	0.00%
100% > and <= 105%	0	0.00%	0	0.00%
> 105%	0	0.00%	0	0.00%
<b>Total</b>	<b>1,099,567,121</b>	<b>100.00%</b>	<b>2,967</b>	<b>100.00%</b>



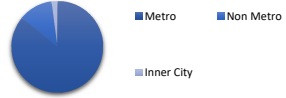
**TABLE 4: GEOGRAPHIC DISTRIBUTION - by primary security property**

State	Value (\$)	% by Value	Loans	% by Loans
New South Wales	281,501,046	25.60%	701	21.42%
Victoria	263,482,706	23.96%	759	23.20%
Queensland	317,872,854	28.91%	1,049	32.06%
Western Australia	124,810,177	11.35%	397	12.13%
South Australia	80,827,467	7.35%	268	8.19%
Tasmania	8,995,176	0.82%	31	0.95%
Australian Capital Territory	18,892,969	1.72%	57	1.74%
Northern Territory	3,184,725	0.29%	10	0.31%
<b>Total</b>	<b>1,099,567,121</b>	<b>100.00%</b>	<b>3,272</b>	<b>100.00%</b>



**TABLE 5: METRO VS. NON-METRO DISTRIBUTION - by primary security property**

Location	Value (\$)	% by Value	Loans	% by Loans
Metro	943,837,465	85.84%	2,748	83.99%
Non Metro	132,202,125	12.02%	458	14.00%
Inner City	23,527,530	2.14%	66	2.02%
<b>Total</b>	<b>1,099,567,121</b>	<b>100.00%</b>	<b>3,272</b>	<b>100.00%</b>



**TABLE 6: DOCUMENTATION TYPE**

Documentation	Value (\$)	% by Value	Loans	% by Loans
Full Doc	1,099,567,120.61	100.00%	3,272	100.00%
No Doc	0.00	0.00%	0	0.00%
Alt Doc	0.00	0.00%	0	0.00%
Low Doc	0.00	0.00%	0	0.00%
<b>Total</b>	<b>1,099,567,121</b>	<b>100.00%</b>	<b>3,272</b>	<b>100.00%</b>



**TABLE 7: MORTGAGE INSURER**

LMI Provider	Value (\$)	% by Value	Loans	% by Loans
QBE	4,130,886	0.38%	28	0.86%
ARCH	55,911,696	5.08%	105	3.21%
Helia	79,177,001	7.20%	346	10.57%
No Data	960,347,537	87.34%	2,793	85.36%
<b>Total</b>	<b>1,099,567,121</b>	<b>100.00%</b>	<b>3,272</b>	<b>100.00%</b>



TABLE 8: ARREARS

Days	Value (\$)	% by Value	Loans	% by Loans
Current	1,079,960,243	98.22%	3,227	98.62%
1-30 days	19,606,878	1.78%	45	1.38%
31-60 days	0	0.00%	0	0.00%
61-90 days	0	0.00%	0	0.00%
91-120 days	0	0.00%	0	0.00%
121-150 days	0	0.00%	0	0.00%
151-180 days	0	0.00%	0	0.00%
181 days or more	0	0.00%	0	0.00%
<b>Total</b>	<b>1,099,567,121</b>	<b>100.00%</b>	<b>3,272</b>	<b>100.00%</b>

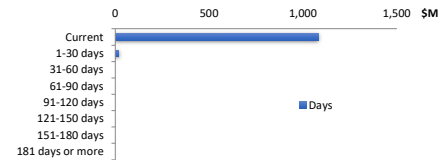


TABLE 9: SEASONING

Years	Value (\$)	% by Value	Loans	% by Loans
0 to less than 1	0	0.00%	0	0.00%
1 to less than 2	567,391,618	51.60%	1,330	40.65%
2 to less than 3	212,028,228	19.28%	605	18.49%
3 to less than 4	68,383,219	6.22%	215	6.57%
4 to less than 5	16,946,613	1.54%	51	1.56%
5 to less than 6	15,422,611	1.40%	63	1.93%
6 to less than 7	157,976,753	14.37%	700	21.39%
7 to less than 8	49,143,137	4.47%	238	7.27%
8 to less than 9	5,454,872	0.50%	24	0.73%
9 to less than 10	2,020,106	0.18%	14	0.43%
10 to less than 11	428,238	0.04%	1	0.03%
11 to less than 12	151,623	0.01%	1	0.03%
12 to less than 13	40,410	0.00%	1	0.03%
13 to less than 14	0	0.00%	0	0.00%
14 to less than 15	83,420	0.01%	1	0.03%
Greater than 15	4,096,273	0.37%	28	0.86%
<b>Total</b>	<b>1,099,567,121</b>	<b>100.00%</b>	<b>3,272</b>	<b>100.00%</b>

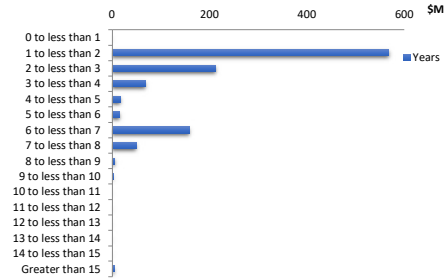


TABLE 10: REMAINING TERM

Years	Value (\$)	% by Value	Loans	% by Loans
0 to 5	261,001	0.02%	7	0.21%
more than 5 to 10	4,611,342	0.42%	39	1.19%
more than 10 to 15	10,777,885	0.98%	65	1.99%
more than 15 to 20	25,749,971	2.34%	113	3.45%
more than 20 to 25	268,375,176	24.41%	1,077	32.92%
more than 25 to 30	789,791,745	71.83%	1,971	60.24%
Greater than 30	0	0.00%	0	0.00%
<b>Total</b>	<b>1,099,567,121</b>	<b>100.00%</b>	<b>3,272</b>	<b>100.00%</b>

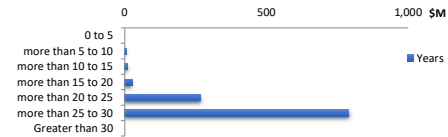


TABLE 11: ORIGINAL TERM

Years	Value (\$)	% by Value	Loans	% by Loans
0 to 5	0	0.00%	0	0.00%
more than 5 to 10	193,648	0.02%	3	0.09%
more than 10 to 15	3,631,748	0.33%	29	0.89%
more than 15 to 20	17,253,026	1.57%	88	2.69%
more than 20 to 25	63,069,568	5.74%	197	6.02%
more than 25 to 30	1,015,419,130	92.35%	2,955	90.31%
Greater than 30	0	0.00%	0	0.00%
<b>Total</b>	<b>1,099,567,121</b>	<b>100.00%</b>	<b>3,272</b>	<b>100.00%</b>

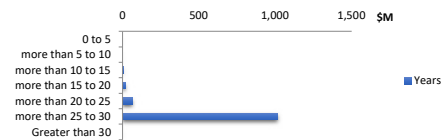


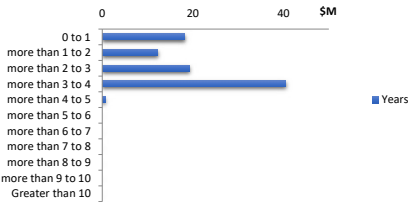
TABLE 12: LOAN TYPE

	Value (\$)	% by Value	Loans	% by Loans
Principal & Interest	1,008,625,369	91.73%	3,022	92.36%
Interest Only (excl. LOC)	90,941,751	8.27%	250	7.64%
Line of Credit	0	0.00%	0	0.00%
<b>Total</b>	<b>1,099,567,121</b>	<b>100.00%</b>	<b>3,272</b>	<b>100.00%</b>



**TABLE 13: INTEREST ONLY REMAINING TERM**

Years	Value (\$)	% by Value	Loans	% by Loans
0 to 1	18,219,854	1.66%	61	24.40%
more than 1 to 2	12,295,491	1.12%	32	12.80%
more than 2 to 3	19,216,542	1.75%	48	19.20%
more than 3 to 4	40,546,826	3.69%	106	42.40%
more than 4 to 5	663,039	0.06%	3	1.20%
more than 5 to 6	0	0.00%	0	0.00%
more than 6 to 7	0	0.00%	0	0.00%
more than 7 to 8	0	0.00%	0	0.00%
more than 8 to 9	0	0.00%	0	0.00%
more than 9 to 10	0	0.00%	0	0.00%
Greater than 10	0	0.00%	0	0.00%
<b>Total</b>	<b>90,941,751</b>	<b>8.27%</b>	<b>250</b>	<b>100.00%</b>



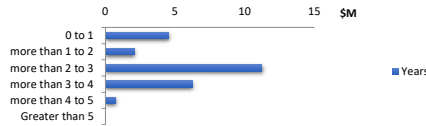
**TABLE 14: REPAYMENT TYPE**

Rate Type	Balance	% Balance	Loan Count	% Loan Count
Variable Rate	1,074,769,753	97.74%	3,209	98.07%
Fixed Rate	24,797,368	2.26%	63	1.93%
<b>Total</b>	<b>1,099,567,121</b>	<b>100.00%</b>	<b>3,272</b>	<b>100.00%</b>



**TABLE 15: FIXED RATE REMAINING TERM**

Years	Value (\$)	% by Value	Loans	% by Loans
0 to 1	4,530,041	0.41%	18	0.55%
more than 1 to 2	2,078,008	0.19%	2	0.06%
more than 2 to 3	11,226,763	1.02%	27	0.83%
more than 3 to 4	6,215,540	0.57%	14	0.43%
more than 4 to 5	747,016	0.07%	2	0.06%
Greater than 5	0	0.00%	0	0.00%
<b>Total</b>	<b>24,797,368</b>	<b>2.26%</b>	<b>63</b>	<b>1.93%</b>



**TABLE 16: BORROWER TYPE**

	Value (\$)	% by Value	Loans	% by Loans
Individual	590,071,812	53.66%	1,384	46.65%
Company	509,495,309	46.34%	1,583	53.35%
<b>Total</b>	<b>1,099,567,121</b>	<b>100.00%</b>	<b>2,967</b>	<b>100.00%</b>



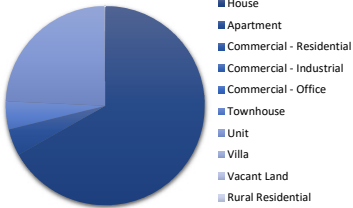
**TABLE 17: OCCUPANCY TYPE**

	Value (\$)	% by Value	Loans	% by Loans
Owner Occupied	458,303,187	41.68%	1,272	38.88%
Investment	641,263,934	58.32%	2,000	61.12%
<b>Total</b>	<b>1,099,567,121</b>	<b>100.00%</b>	<b>3,272</b>	<b>100.00%</b>



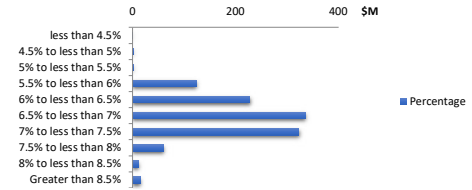
**TABLE 18: PROPERTY TYPE**

	Value (\$)	% by Value	Loans	% by Loans
House	734,404,981	66.79%	2,091	63.91%
Apartment	47,865,276	4.35%	152	4.65%
Commercial - Residential	0	0.00%	0	0.00%
Commercial - Industrial	0	0.00%	0	0.00%
Commercial - Office	0	0.00%	0	0.00%
Townhouse	49,881,676	4.54%	194	5.93%
Unit	265,117,544	24.11%	823	25.15%
Villa	2,029,781	0.18%	11	0.34%
Vacant Land	0	0.00%	0	0.00%
Rural Residential	267,863	0.02%	1	0.03%
<b>Total</b>	<b>1,099,567,121</b>	<b>100.00%</b>	<b>3,272</b>	<b>100.00%</b>



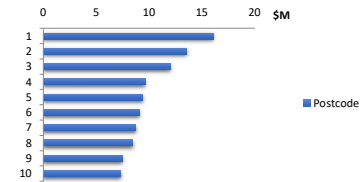
**TABLE 19: INTEREST RATE DISTRIBUTION**

Percentage	Value (\$)	% by Value	Loans	% by Loans
less than 4.5%	627,292	0.06%	2	0.06%
4.5% to less than 5%	1,627,170	0.15%	4	0.12%
5% to less than 5.5%	1,700,158	0.15%	5	0.15%
5.5% to less than 6%	123,420,934	11.22%	378	11.55%
6% to less than 6.5%	227,538,081	20.69%	591	18.06%
6.5% to less than 7%	334,675,150	30.44%	1,005	30.72%
7% to less than 7.5%	322,964,828	29.37%	1,000	30.56%
7.5% to less than 8%	60,110,994	5.47%	171	5.23%
8% to less than 8.5%	11,674,592	1.06%	44	1.34%
Greater than 8.5%	15,227,921	1.38%	72	2.20%
<b>Total</b>	<b>1,099,567,121</b>	<b>100.00%</b>	<b>3,272</b>	<b>100.00%</b>



**TABLE 20: TOP 10 POST CODES - by value**

Postcode	Value (\$)	% by Value	Loans	% by Loans
118				
Postcode	Balance	% Balance	Loan Count	% Loan Count
3029	16,062,607	1.46%	41	1.25%
4207	13,539,836	1.23%	45	1.38%
2154	11,989,092	1.09%	20	0.61%
4503	9,619,597	0.87%	47	1.44%
3064	9,404,411	0.86%	24	0.73%
3030	9,082,543	0.83%	17	0.52%
4209	8,756,632	0.80%	25	0.76%
4300	8,468,156	0.77%	21	0.64%
4133	7,481,035	0.68%	16	0.49%
4301	7,339,050	0.67%	28	0.86%
<b>Total</b>	<b>101,742,959</b>	<b>9.25%</b>	<b>284</b>	<b>8.68%</b>



**TABLE 21: Hardship**

Hardship Type	Value (\$)	% by Value	Loans	% by Loans
COVID-19	-	0.00%	0	0.00%
Standard	2,399,135.85	0.22%	5	0.15%
Non-Hardship	1,097,167,984.76	99.78%	3,267	99.85%
<b>Total</b>	<b>1,099,567,121</b>	<b>100.00%</b>	<b>3,272</b>	<b>100.00%</b>



**TABLE 22: Green Loans**

Green Loans	Value (\$)	% by Value	Loans	% by Loans
Yes	-	0.00%	0	0.00%
No	1,099,567,120.61	100.00%	3,272	100.00%
<b>Total</b>	<b>1,099,567,121</b>	<b>100.00%</b>	<b>3,272</b>	<b>100.00%</b>

